

306-1056-00 TITLE PAGE
306-1056-01 PLAN, PROFILE AND SECTION
306-1056-02 DETAILS

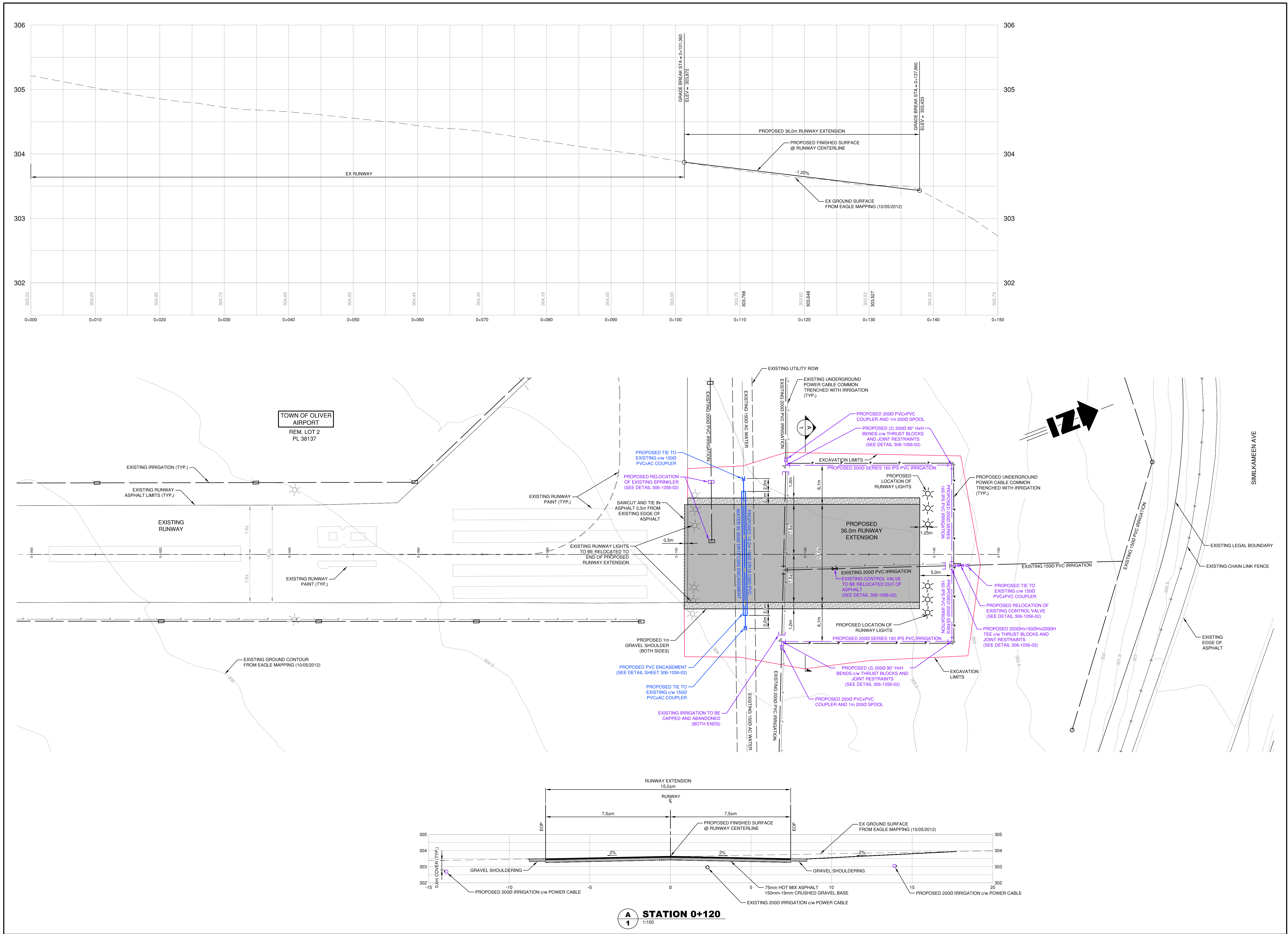
| | |
|--------------------|--|
| ISSUES / REVISIONS | |
| CONSULTANT SEAL | |



201 - 2079 Falcon Road ■ Kamloops BC ■ V2C 4J2
tel 250.828.0881 ■ fax 250.828.0717
info@TRUE.bc.ca

OLIVER AIRPORT RUNWAY EXTENSION

| | | |
|-----------------------|------------------------|------------------------------------|
| SCALE | 1:2000 | |
| DESIGN BY | SU | |
| DRAWN BY | MK | |
| DATE | OCTOBER, 2020 | |
| PROJECT REFERENCE No. | 306-1056 | |
| DRAWING No. | <div>306-1056-00</div> | <div>SHEET</div> <div>0 OF 2</div> |
| | | <div>REVISION</div> <div>1</div> |



LEGEND

| EXISTING | DESCRIPTION | PROPOSED |
|----------|-------------------|----------|
| | SANITARY MAIN | |
| | SANITARY MANHOLE | |
| | CLEANOUT | |
| | LIFT STATION | |
| | SEPTIC TANK | |
| | STORM MAIN | |
| | STORM DITCH | |
| | CULVERT | |
| | STORM MANHOLE | |
| | CATCH BASIN | |
| | STORM DRYWELL | |
| | WATER MAIN | |
| | WATER SERVICE | |
| | CURB STOP | |
| | VALVE | |
| | STANDPIPE | |
| | HYDRANT | |
| | AIR RELEASE VALVE | |
| | REDUCER | |
| | SPRINKLER | |
| | IRRIGATION BOX | |
| | END CAP | |
| | POWER | |
| | TEL | |
| | CABLE | |
| | STREET LIGHT | |
| | GAS | |
| | POWER POLE | |
| | LAMP STANDARD | |
| | LIGHT POST | |
| | POLE ANCHOR | |
| | JUNCTION BOX | |
| | TEST PIT | |
| | IRON PIN | |
| | SURVEY CONTROL | |

| No. | DATE | DESCRIPTION | BY | APP |
|-----|-----------|-------------------|----|-----|
| 1 | JAN 21/21 | ISSUED FOR TENDER | MK | SU |

ISSUES / REVISIONS

| No. | DATE | DESCRIPTION | BY | APP |
|-----|------|-------------|----|-----|
|-----|------|-------------|----|-----|

CONSULTANT SEAL

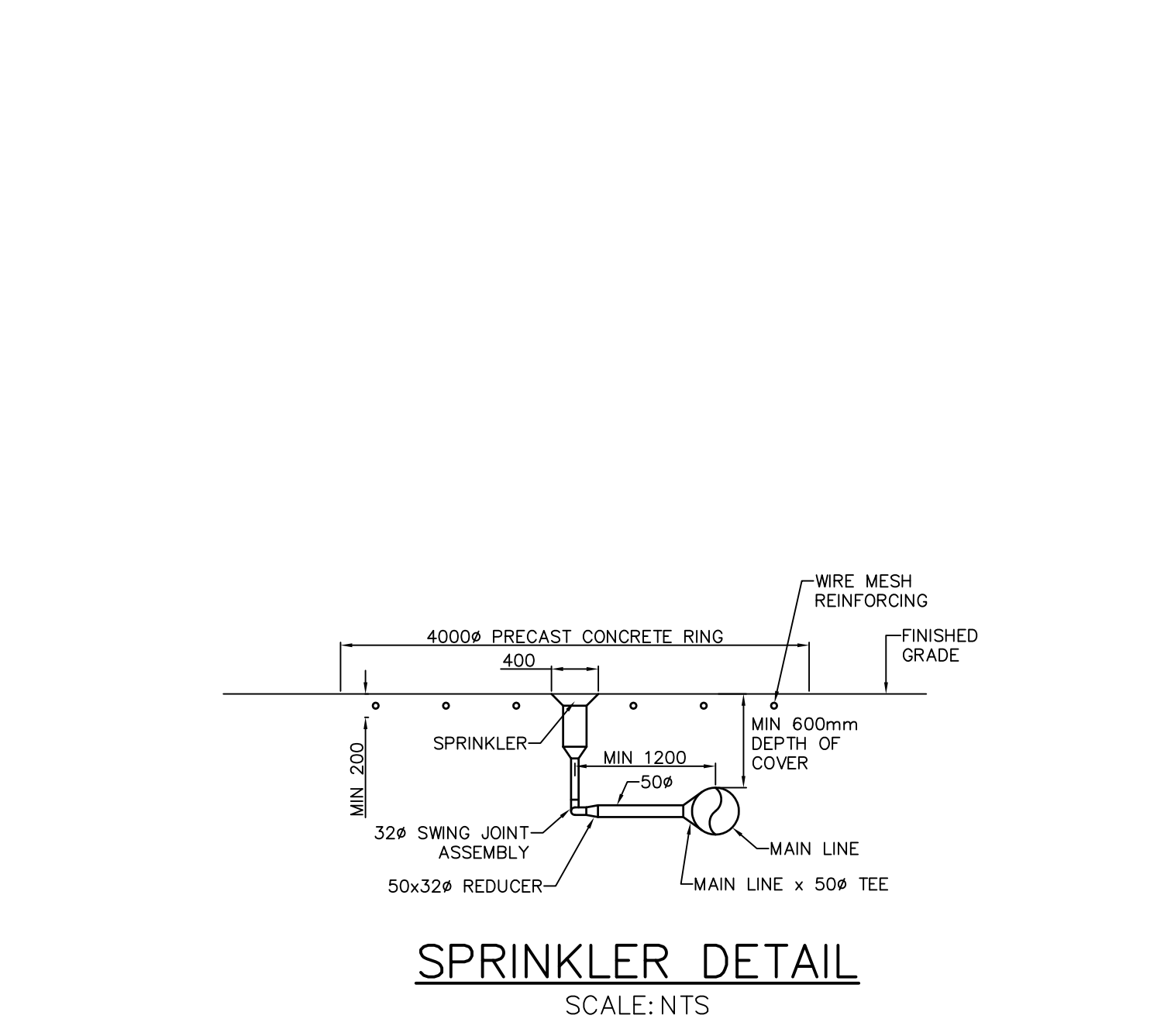
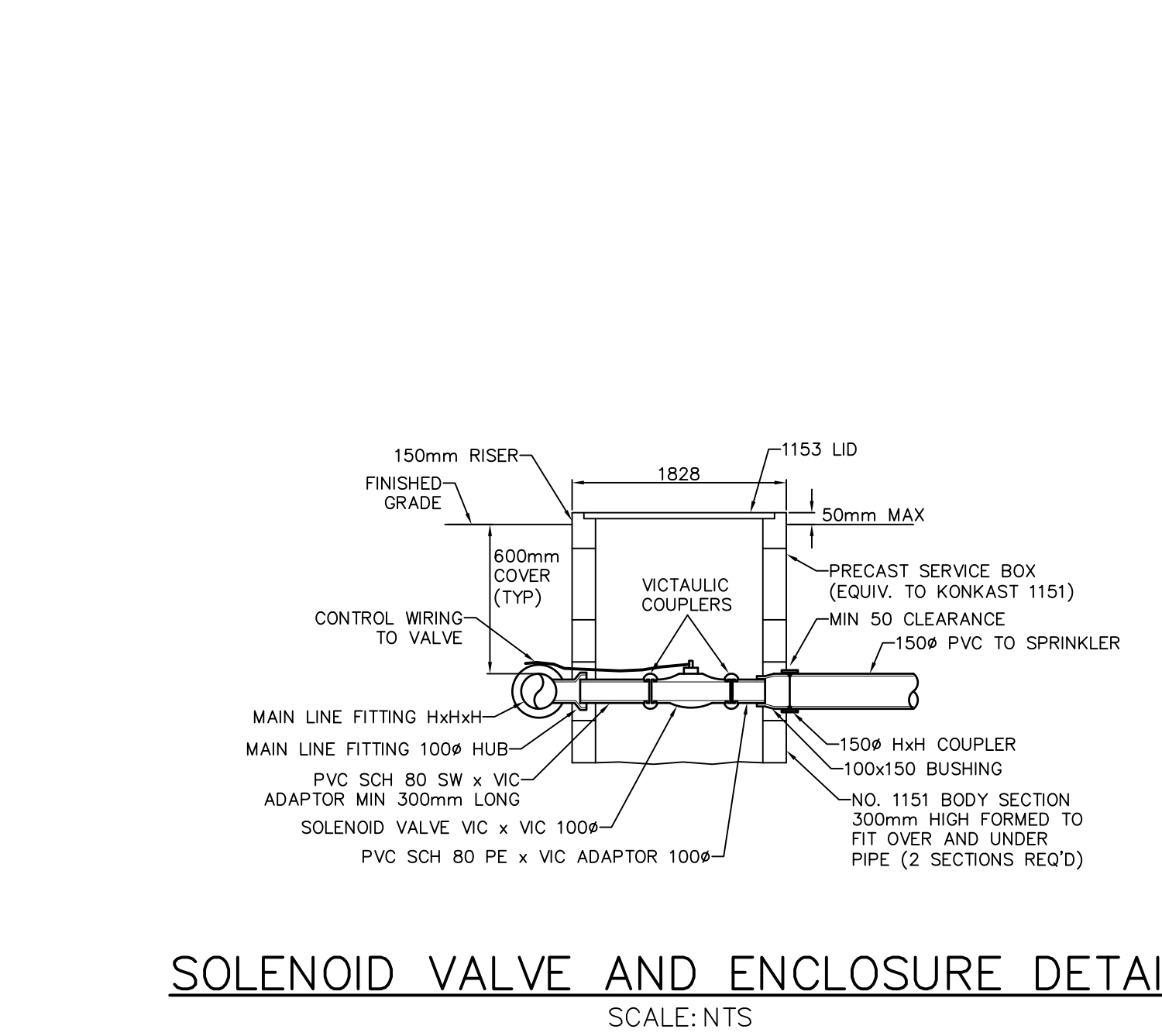
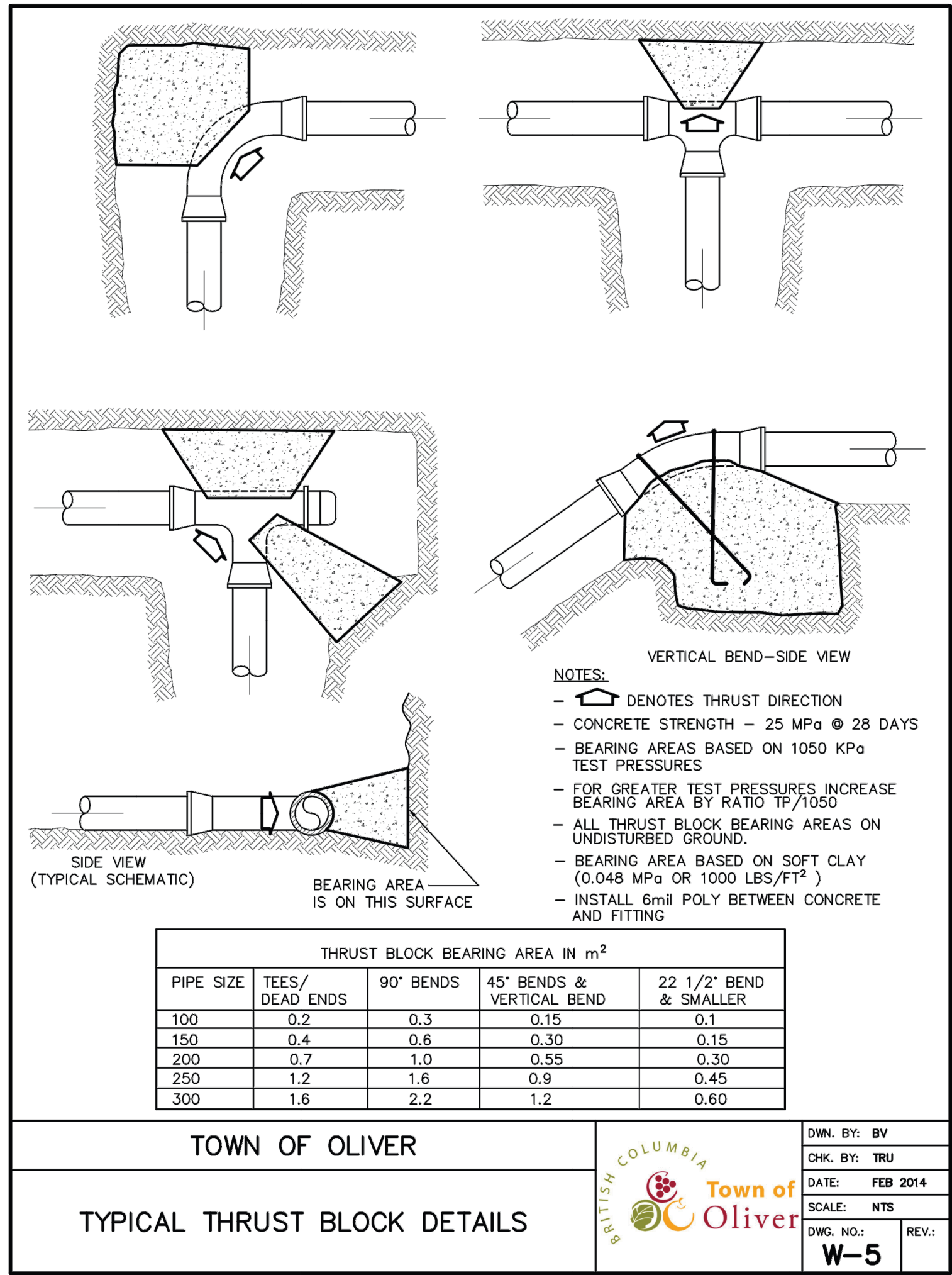
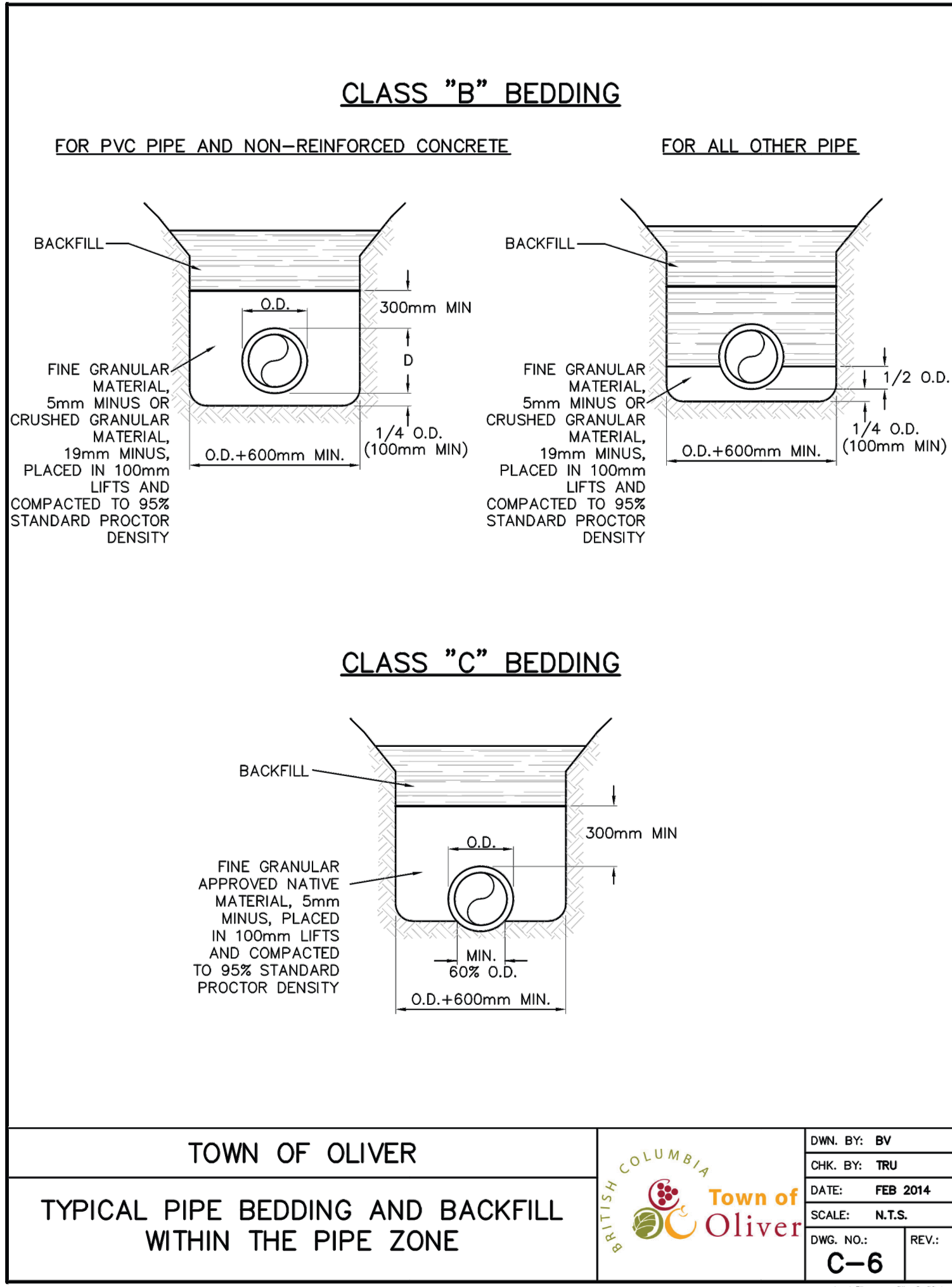
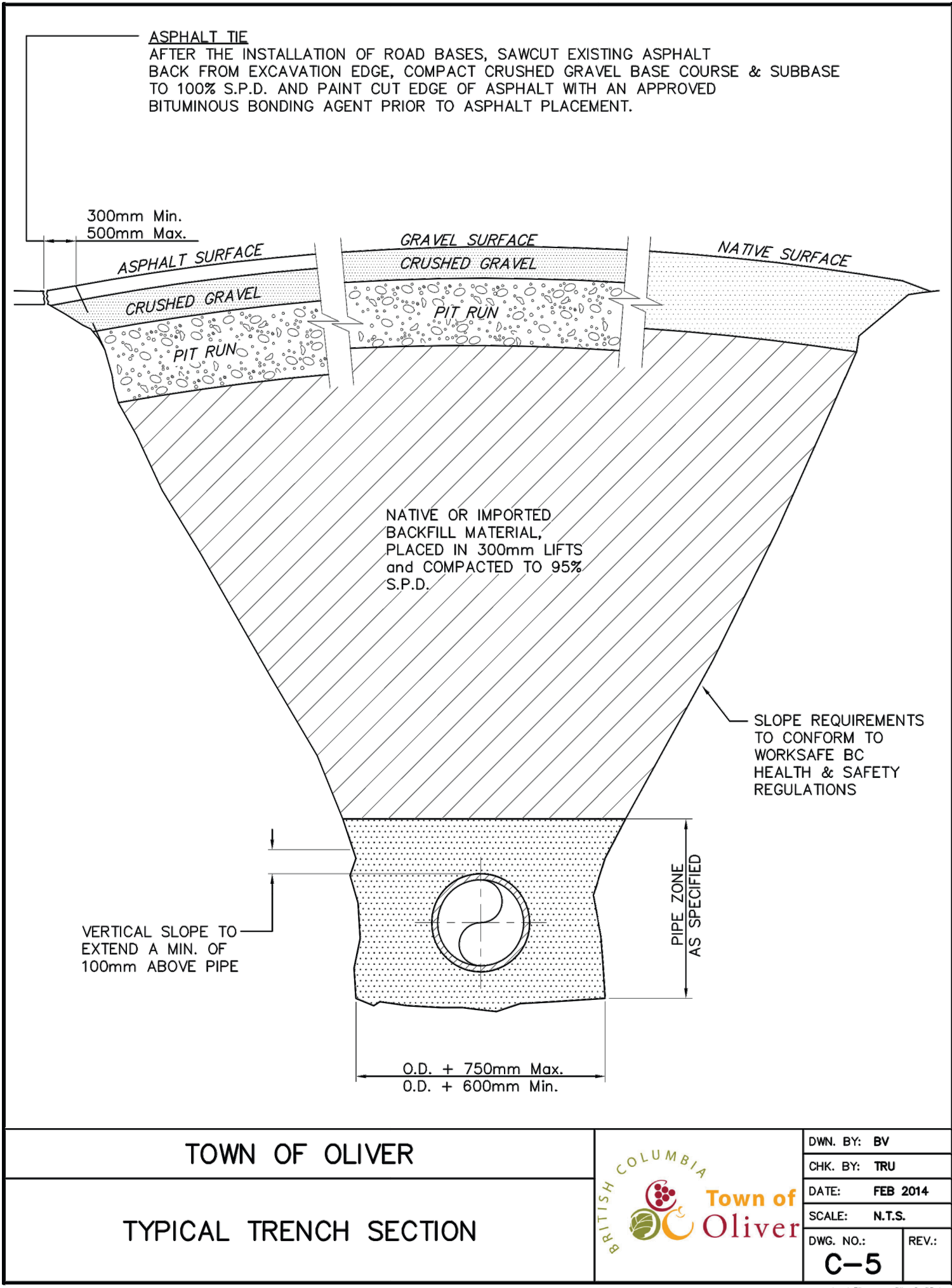
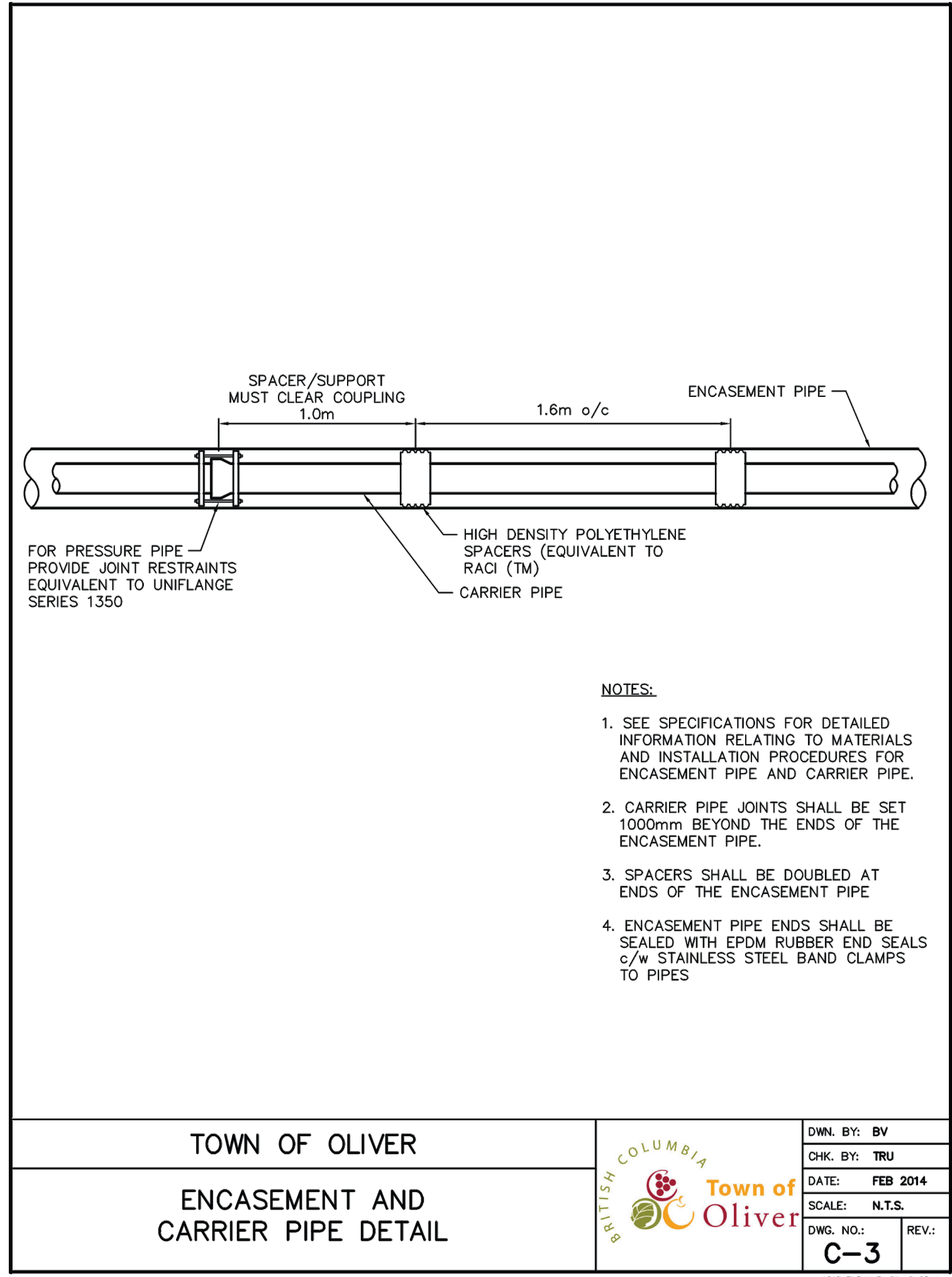
201 - 7979 Falcon Road ■ Kamloops BC ■ V2C 4J2
tel 250.828.0881 ■ fax 250.828.0717
info@TRUE.bc.ca

Oliver
TOWN OF
CANADA'S WINE CAPITAL

OLIVER AIRPORT
RUNWAY
EXTENSION

PLAN,
PROFILE
AND
SECTION

| SCALE | H-1:250 V-1:25 |
|-----------------------|-------------------|
| DESIGN BY | SU |
| DRAWN BY | MK |
| DATE | OCTOBER, 2020 |
| PROJECT REFERENCE No. | 306-1056 |
| DRAWING No. | 306-1056-01 |
| SHEET | 1 OF 2 |
| REVISION | 1 |



LEGEND

| EXISTING | DESCRIPTION | PROPOSED |
|----------|--------------------|----------|
| --- | SANITARY MAIN | --- |
| --- | SANITARY FORCEMAIN | --- |
| --- | CLEANOUT | --- |
| --- | LIFT STATION | --- |
| --- | SEPTIC TANK | --- |
| --- | STORM MAIN | --- |
| --- | STORM DITCH | --- |
| --- | CULVERT | --- |
| --- | STORM MANHOLE | --- |
| --- | CATCHBASIN | --- |
| --- | STORM DRYWELL | --- |
| --- | WATER MAIN | --- |
| --- | WATER SERVICE | --- |
| --- | CURB STOP | --- |
| --- | VALVE | --- |
| --- | STANDPIPE | --- |
| --- | HYDRANT | --- |
| --- | AIR RELEASE VALVE | --- |
| --- | REDUCER | --- |
| --- | SPRINKLER | --- |
| --- | IRRIGATION BOX | --- |
| --- | END CAP | --- |
| --- | POWER | --- |
| --- | TEL | --- |
| --- | CABLE | --- |
| --- | STREET LIGHT | --- |
| --- | GAS | --- |
| --- | POWER POLE | --- |
| --- | LAMP STANDARD | --- |
| --- | LIGHT POST | --- |
| --- | POLE ANCHOR | --- |
| --- | JUNCTION BOX | --- |
| --- | TEST PIT | --- |
| --- | IRON PIN | --- |
| --- | SURVEY CONTROL | --- |

1 JAN 21/21 ISSUED FOR TENDER MK SU

No. DATE DESCRIPTION BY APP

ISSUES / REVISIONS

CONSULTANT SEAL

TRUE CONSULTING

201 - 2079 Falcon Road ■ Kamloops BC ■ V2C 4J2
tel 250.828.0881 ■ fax 250.828.0717
info@TRUE.bc.ca

Oliver
CANADA'S WINE CAPITAL

OLIVER AIRPORT RUNWAY EXTENSION

DETAILS

SCALE: N.T.S.

DESIGN BY: SU

DRAWN BY: MK

DATE: OCTOBER, 2020

PROJECT REFERENCE No.: 306-1056

DRAWING No.: 306-1056-02

SHEET 2 OF 2

REVISION 1