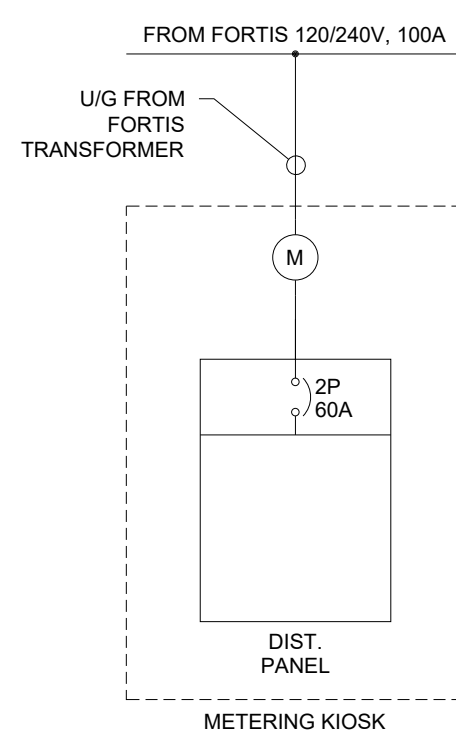
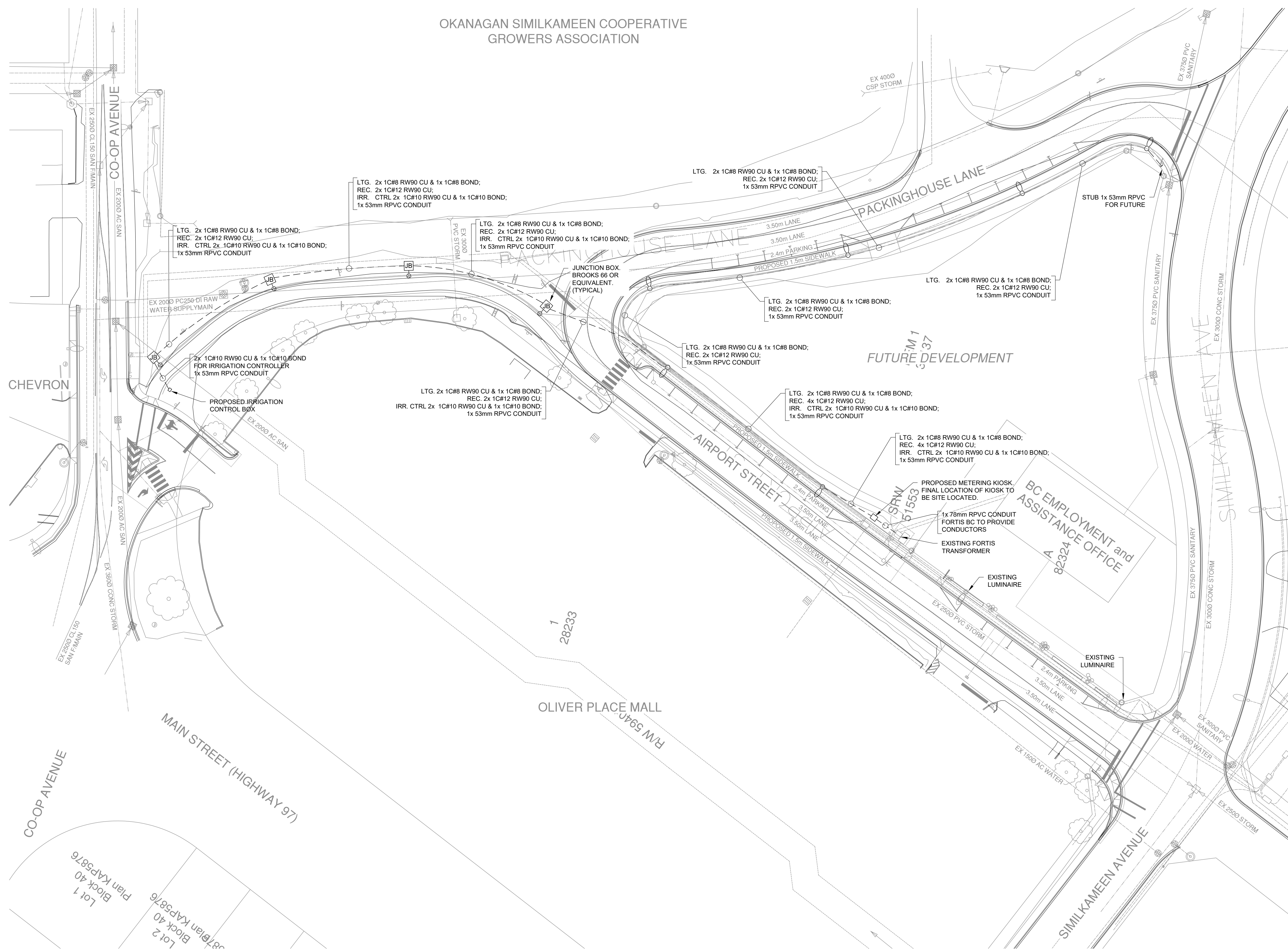
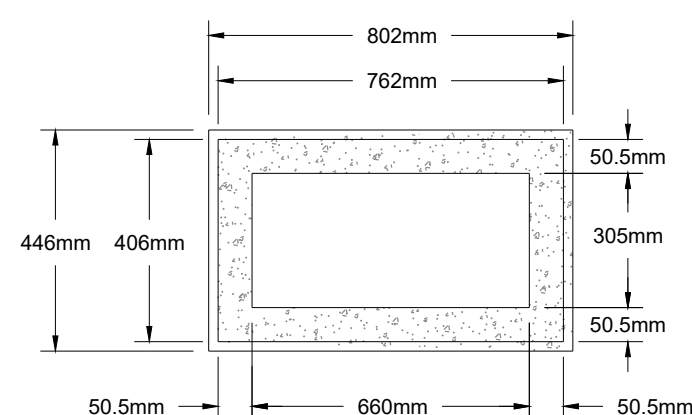


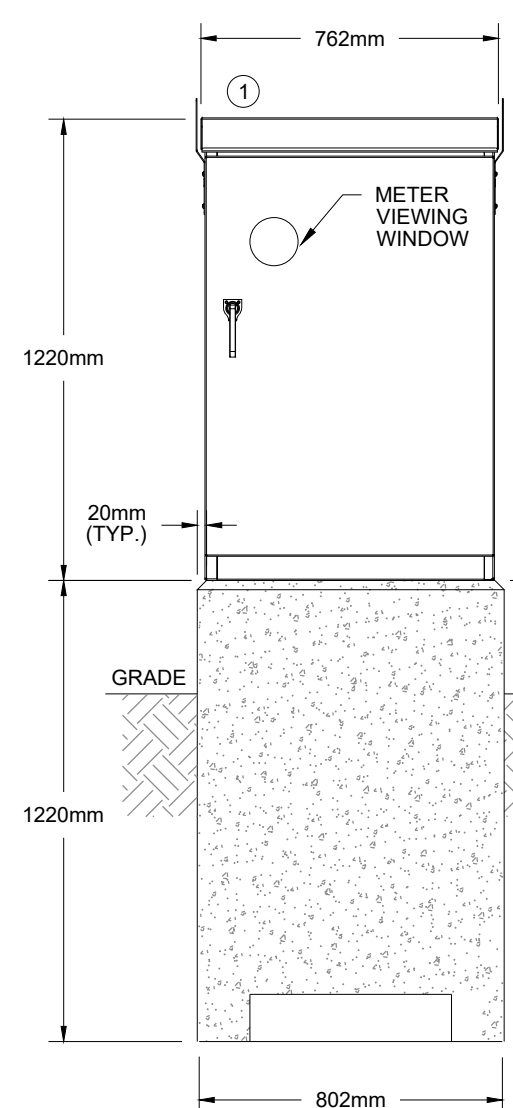
OKANAGAN SIMILKAMEEN COOPERATIVE GROWERS ASSOCIATION



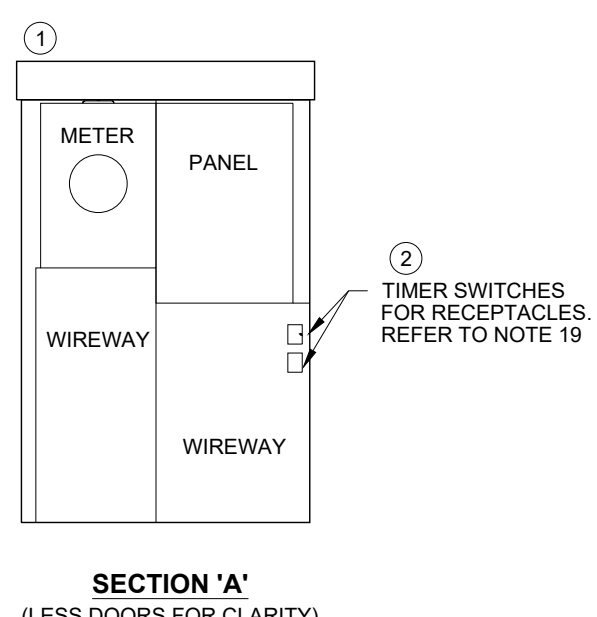
SINGLE LINE DIAGRAM



BASE PLAN VIEW



METERING KIOSK SCALE N.T.S.



SECTION 'A' (LESS DOORS FOR CLARITY)

TIMER SWITCHES FOR RECEPTACLES REFER TO NOTE 19

BILL OF MATERIALS		
TYPE	DESCRIPTION	CATALOG NUMBER
1	MARINE-GRADE ALUMINUM CONSTRUCTION SINGLE FRONT OUTER HINGED DOOR CW PAD-LOCKABLE 3-POINT LATCH MECHANISM ON DOOR. DIMENSIONS OF 48" H X 30" W X 16" D. POWDER COATED GREY, CSA TYPE 3R RATED. METERING KIOSK TO BE FORTIS BC COMPLIANT CW UTILITY RISER CONDUIT, 200A 4-JAW METER BASE, 100A SERVICE ENTRANCE PANEL, 120/240V, 1PH, 3W, BOLT IN STYLE BREAKERS CW 2P-60A MAIN BREAKER, 18 CIRCUITS CAPACITY & METER VIEWING WINDOW IN KIOSK DOOR. PRECAST BASE #4-0046 TO BE INCLUDED FOR ENCLOSURE CW OPEN BOTTOM BASE.	STANDARD OF ACCEPTANCE: VALID MANUFACTURING KSDA48 OR EQUIVALENT
2	7-DAY SOLAR PROGRAMMABLE WALL SWITCH FOR RECEPTACLES	HONEYWELL RPLS740B/RPLS741B

LUMINAIRE SCHEDULE								
POLE	LUMINAIRE DESCRIPTION	CCT (K)	WATTS	LUMENS	POLE TYPE	POLE HEIGHT	BASE	OPTIONS
A 47	ERL1-06B340-120-277V	4000K	47W	6000	NOVA POLE	9m		C/W 7-PIN RECEPTACLE FOR PHOTOCELL
B 31.5	ECF-S-321-400-AM-G2-2	4000K	31.5W	2092	NOVA POLE	6m		C/W 7-PIN RECEPTACLE FOR PHOTOCELL

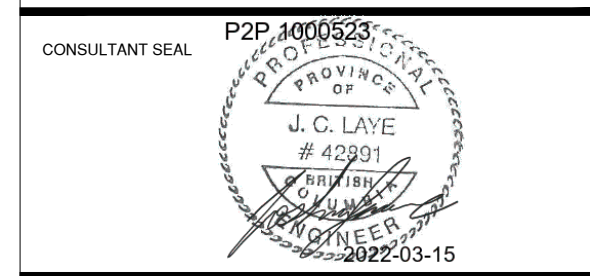
LIGHTING DESIGN DATA			
NAME	ILLUMINATION	DESIGN DATA	DESIGN CRITERIA
		ILLUMINATION LEVEL (AVG. FC)	DESIGN AVG.
PATHWAY LIGHTING	31.5W LED	6.89	1.77
ROADWAY	47W LED	5.42	3.01

STREETLIGHTING LAYOUT SCALE 1:500

EXCEED
ELECTRICAL ENGINEERING
KAMLOOPS, BC • (250) 434-9489
www.exceedeng.com

No.	DATE	DESCRIPTION	BY	APPD
2	MAR 09/22	ISSUED FOR TENDER	GT	JCL
1	DEC 10/21	ISSUED FOR CLIENT REVIEW	GT	JCL

ISSUES / REVISIONS



TRUE CONSULTING
201 - 2079 Falcon Road ■ Kamloops BC ■ V2C 4J2
tel 250.828.0881 ■ fax 250.828.0717
info@TRUE.bc.ca

Oliver Town of
CANADA'S WINE CAPITAL

PACKINGHOUSE LANE RECONSTRUCTION

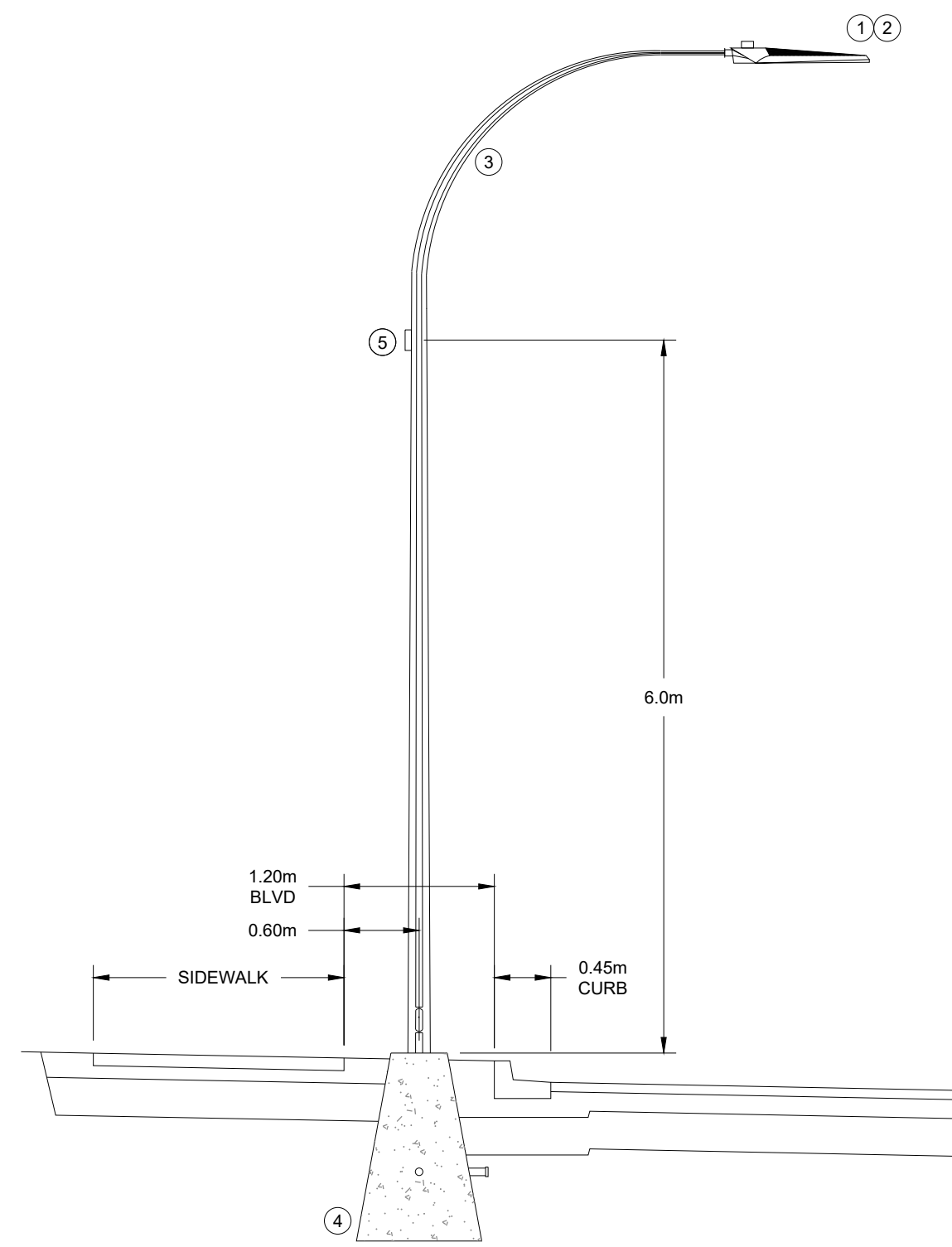
ELECTRICAL SITE PLAN

SCALE 1:500
DESIGN BY JCL
DRAWN BY GT
DATE NOV 2021
PROJECT REFERENCE No. 306-1881
DRAWING No. SHEET
306-1881-E01 ISSUE-REV
2

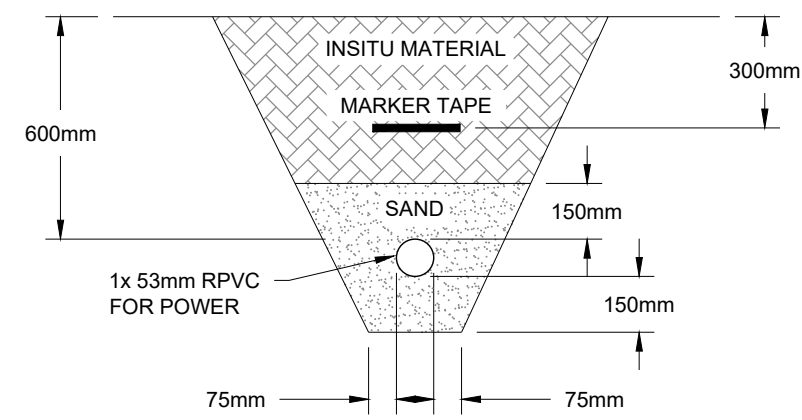
FILE: c:\users\jclay\documents\electrical\engineering\306-1881-001\packhouse\site plan\reconstruction\electrical\drawing\18811.dwg

GENERAL NOTES

1. INSTALLATION MUST BE IN ACCORDANCE WITH THE TOWN OF OLIVER STANDARDS & FORTIS BC STANDARDS, CANADIAN ELECTRICAL CODE CSA 22.1-18 (BC AMENDMENTS), AND WITH THE SAFETY ENGINEERING SERVICES DIVISION.
2. LUMINAIRE LOCATIONS ARE TO BE SURVEYED BY THE CONTRACTOR AND CONFIRMED BY THE OWNERS REPRESENTATIVE PRIOR TO INSTALLATION OF BASES.
3. GROUNDING SHALL BE IN ACCORDANCE WITH THE CANADIAN ELECTRICAL CODE CSA 22.1-18.
4. SERVICE CONDUIT AND CONDUCTORS TO BE INSTALLED BY THE CONTRACTOR.
5. CONDUITS, BASES & JUNCTION BOXES SHALL BE INSTALLED BY A QUALIFIED ELECTRICAL CONTRACTOR WHO IS REQUIRED TO OBTAIN A PERMIT FROM TECHNICAL SAFETY B.C.
6. ALL CONDUITS UNDER ROADWAY SHALL BE BURIED MIN. 900mm DEEP. ALL OTHER CONDUITS SHALL BE BURIED MIN. 600mm DEEP & EMBEDDED IN SAND 150mm ABOVE & BELOW. A 'BURIED CABLE' MARKER SHALL BE INSTALLED IN ALL TRENCHED (300mm ABOVE INSTALLED CONDUIT & MIN. 300mm BELOW GRADE).
7. ALL CONDUCTORS, NOT IN SIGNAL CABLE, SHALL BE STRANDED COPPER, TYPE RW90 AND TWH INSULATED, COLOUR CODED.
8. EMPTY CONDUITS SHALL HAVE A NYLON PULL STRING INSTALLED AND ENDS CAPPED.
9. COMMON CIRCUIT WIRING SHALL BE TY-WRAPPED TOGETHER & TAGGED IN JUNCTION BOXES AND ACCESS POINTS USING PANDUIT MP250-C I.D. TAGS AND INDELEIBLE BLACK MARKER PEN.
10. 1.0m OF CABLE OR CONDUCTOR SLACK IS TO BE COILED IN EACH JUNCTION BOX.
11. ALL CONDUCTORS IN JUNCTION BOXES SHALL BE HUNG FROM RPVC CONDUIT SUPPORT BAR.
12. SLIPFITTER SHALL BE ADJUSTABLE AND PERMIT SECURE ATTACHMENT TO POLE TENON.
13. ALL POLES SHALL BE DESIGNED TO MEET 25 YEAR MEAN WIND LOADS FOR INSTALLATION LOCATION IN ACCORDANCE WITH CSA-S6-06.
14. POLES TO BE EQUIPPED WITH REINFORCED HAND HOLE MINIMUM 120mm X 120mm AND COVER ASSEMBLY GROUNDING STUD TO BE BOLTED INSIDE POLE WITHIN REACH OF HAND HOLE, COMPLETE WITH ONE NUT AND TWO WASHERS.
15. POLES SHALL BE FABRICATED WITH THE HAND HOLE ON THE NON-TRAFFIC SIDE.
16. LIGHT LOSS FACTOR (LLF) VALUES BASED ON 20 YEAR MAINTENANCE INTERVAL. LLF USED = 0.85.
17. CONDUCTOR LABEL EXAMPLE: 2C #8 LUM CCT
2 = NUMBER OF CONDUCTORS
#8 = CONDUCTOR SIZE 8 AWG
LUM CCT 1 = LUMINAIRE CIRCUIT "1"
18. THE CONTRACTOR SHALL REVIEW THE APPROVED SHOP DRAWINGS OF LAMP STANDARD BASES AND POLES TO ENSURE A PROPER MATCH OF BOTH. NO EXTRA COST SHALL BE INCURRED BY THE OWNER FOR POLES NOT ALIGNING WITH THE BASES.
19. CONTRACTOR TO INSTALL (2) HONEYWELL RPLS740B/RPLS741B SERIES 7-DAY PROGRAMMABLE TIMER TO CONTROL POLE RECEPTACLES. (1) CIRCUIT FOR PATHWAY RECEPTACLES AND (1) CIRCUIT FOR STREETLIGHTING RECEPTACLES. INSTALL TIMERS IN METERING KIOSK.

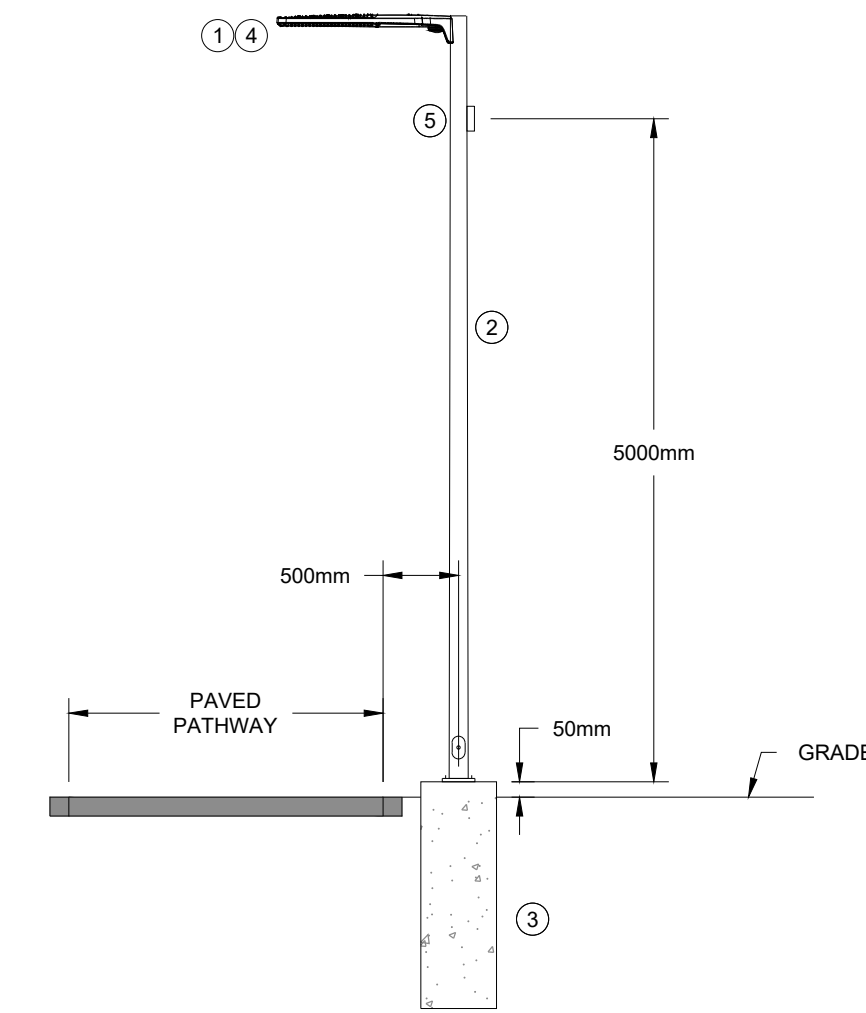


LUMINAIRE TYPE 'A'
SCALE N.T.S.



TRENCH DETAIL 'A-A'
SCALE N.T.S.

STREETLIGHT BILL OF MATERIALS			
ITEM	DESCRIPTION	CATALOG NUMBER	QUANTITY
①	LED LUMINAIRES	REFER TO LUMINAIRE SCHEDULE	6
②	PHOTOCELL	INTERMATIC INC. LED4536SC	6
③	DAVIT POLE 9m COBRAHEAD POLE WITH 2.5m ARM. CW HAND HOLE ON DOWNSTREAM TRAFFIC SIDE. HOT-DIP GALVANIZED & POWDER COATED BLACK	NOVA POLE	6
④	SERVICE POLE BASE, TYPE 'C1', REFER TO MMCD CE1.3 & 1.4	CONTRACTOR PREFERRED SUPPLIER	6
⑤	WEATHERPROOF LOCKABLE 120VAC DUPLEX RECEPTACLE.	CONTRACTOR PREFERRED SUPPLIER	6



LUMINAIRE DETAIL 'B'
SCALE N.T.S.

STREETLIGHT BILL OF MATERIALS			
ITEM	DESCRIPTION	CATALOG NUMBER	QUANTITY
①	LED LUMINAIRES	REFER TO STREETLIGHTING LUMINAIRE SCHEDULE.	4
②	6m POLE CW BASE COVER, BLACK	NOVA POLE	4
③	POLE BASE, TYPE 'B', REFER TO MMCD CE1.2	CONTRACTOR PREFERRED SUPPLIER	4
④	PHOTOCELL	INTERMATIC INC. LED4536SC	4
⑤	WEATHERPROOF LOCKABLE 120VAC DUPLEX RECEPTACLE.	CONTRACTOR PREFERRED SUPPLIER	4

EXCEED
ELECTRICAL ENGINEERING
KAMLOOPS, BC • (250) 434-9489
www.exceedeng.com

No.	DATE	DESCRIPTION	BY	APPD
2	MAR 09/22	ISSUED FOR TENDER	GT	JCL
1	DEC 10/21	ISSUED FOR CLIENT REVIEW	GT	JCL

ISSUES / REVISIONS

CONSULTANT SEAL
P2P 4000525
PROFESSIONAL ENGINEER
J. C. LAYE
42991
2017
2022-03-15

TRUE
CONSULTING

201 - 2079 Falcon Road ■ Kamloops BC ■ V2C 4J2
tel 250.828.0881 ■ fax 250.828.0717
info@TRUE.bc.ca

Oliver
Town of
CANADA'S WINE CAPITAL

**PACKINGHOUSE
LANE
RECONSTRUCTION**

**ELECTRICAL
NOTES,
SCHEDULES &
DETAILS**

SCALE	1:500
DESIGN BY	JCL
DRAWN BY	GT
DATE	NOV 2021

PROJECT REFERENCE No. 306-1881

DRAWING No. SHEET

306-1881-E02 ISSUE-REV

2