



 FireSmart®



Begins at
Home
Home Assessment



ASSESS YOUR RISK FROM WILDFIRE

Answer the questions below to see what changes will make the greatest difference in reducing your home's risk from wildfire.

HOME / NON-COMBUSTIBLE ZONE 0 - 1.5 METRES			COMMENTS
What type of roofing material and construction do you have?	Class A UL/ASTM fire rated (e.g. Metal, clay tile or asphalt shingles)	0	
	Unrated roof assembly (including wood shakes and wood shingle roofs)	30	
Are your gutters combustible or non-combustible?	Non- combustible gutters (metal or aluminum)	0	
	Combustible (plastic, vinyl, wood)	6	
How clean are your roof and gutters?	No needles, leaves or other combustible material	0	
	Needles, leaves or other combustible material present	10	
Are your eaves closed up and vents screened?	Closed eaves and vents with 3 mm (1/8") screening or ASTM ember resistant rated vents	0	
	Open eaves, vents not 3 mm (1/8") screened or ember resistant rated; louvres/ flaps not operational with accumulated combustible debris (e.g. dryer vents)	30	
What type of exterior siding do you have?	Ignition resistant (fibre cement board, log) or non-combustible (stucco, metals, brick/stone)	0	
	Combustible siding or non-ignition resistant siding (vinyl, wood, acrylic stucco)	6	
Is exterior siding free of gaps, holes, or other areas where embers could accumulate, lodge, or penetrate?	No gaps or cracks, missing siding or holes	0	
	Gaps, cracks or holes	10	



FIRESMART® SCORE CARD

HOME / NON-COMBUSTIBLE ZONE

0 - 1.5 METRES

Are walls protected with a minimum 15 centimetres (6 inches) of non-combustible ground-to-siding clearance?	No less than 15 centimetre non-combustible vertical ground-to-siding surface	0	
	Less than 15 centimetres non-combustible vertical ground-to-siding surface	30	
How fire resistant are your windows or doors (including garage doors)?	Tempered glass in all doors and windows and treated Non-combustible Zone and Priority Zone 1; no gaps in ANY doors	0	
	Multi pane glass small/medium and treated Non-combustible Zone and Priority Zone 1; no gaps in ANY doors	1	
	Multi pane glass large and treated Non-combustible Zone and Priority Zone 1; no gaps in ANY doors	2	
	Single pane glass- small/medium and treated Non-combustible Zone, Priority Zone 1 and Priority Zone 2; no gaps in ANY doors	4	
	Single pane glass large and treated Non-combustible Zone, Priority Zone 1 and Priority Zone 2	6	
	Single or Multi pane glass – any size and no treatment to Non-combustible Zone and Priority Zone 1; gaps in ANY doors	30	
Is the underside of your balcony, deck, porch or open foundation completely sheathed-in or open and free of combustible materials?	N/A, no gaps or cracks, heavy timber, non-combustible or fire-rated construction with non-combustible surface and no combustible debris under deck	0	
	Gaps or cracks, no solid wood or fire-rated construction with combustible surface and/or combustible debris under deck	30	
Is your home set back from the edge of a slope?	Building is located on the bottom	3	
	Building is located on the mid to upper portion or crest of a hill and set back	10	
	Building is located on the mid to upper portion or crest of a hill with no set back with no Non-combustible Zone, Priority Zone 1, 2 and 3 treatment	30	

HOME / NON-COMBUSTIBLE ZONE -SCORE



FIRESMART® SCORE CARD

YARD / NON-COMBUSTIBLE ZONE

0 - 1.5 METRES

1.5 metres from furthest extent of home (includes overhangs, extensions and decks)	Non-combustible surface, no combustible debris, materials, fences or plants present	0	
	Combustible surface, combustible debris, fences or plants present	30	

YARD / NON-COMBUSTIBLE ZONE - SCORE

YARD / ZONE 1

1.5 - 10 metres

Where are your woodpiles or other combustible materials stored? (Vehicles, construction materials, debris etc.)	More than 10 metres from home	0	
	Less than 10 metres from home	30	
Where are your unmitigated outbuildings located? (buildings that are not-mitigated to the same standards as the primary home)	More than 15 metres (50 feet) from home	0	
	Less than 15 metres from home	30	
What type of forest grows within 10 metres of your home?	TREES		
	Healthy deciduous (i.e. poplar, aspen, birch)	0	
	Mixedwood (both conifer and deciduous)	30	
	Conifer (i.e. spruce, pine, fir, cedar)	30	
What kind of surface vegetation and combustible materials are within 10 metres of your home and outbuildings?	Well maintained lawn (15 centimetres; 6 inches or shorter; low flammability; low growing discontinuous plants with treated Noncombustible Zone (0-1.5 metres)	0	
	Unmaintained grass (greater than 15 centimetres in length); flammable plants; continuous plants or tall growing plants; untreated Non-combustible Zone	30	
	Twigs, branches, logs and accumulations of tree needles or leaves and other combustible materials	30	

YARD / ZONE 1 - SCORE

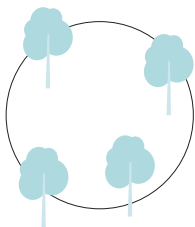


FIRESMART® SCORE CARD

YARD / Zone 2
10 - 30 metres

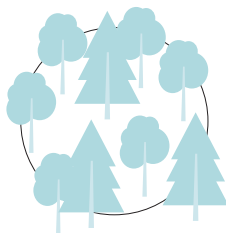
		TREES		
What type of forest surrounds your home?	Healthy deciduous (i.e. poplar, birch, cottonwood)	0		
	Mixedwood (both deciduous and conifer)	10		
	Conifer (i.e. spruce, pine, fir, cedar) See below illustration*			
	Separated	10		
	Continuous	30		
What kind of surface vegetation grows within 10 - 30 metres of your home?	None within 10 - 30 metres	0		
	Scattered within 10 - 30 metres	5		
	Unmaintained grass (greater than 15 cm)	5		
	Abundant within 10 - 30 metres	10		
Are flammable shrubs well-spaced?	None within 10 - 30 metres	0		
	Scattered within 10 - 30 metres	5		
	Abundant within 10 - 30 metres	10		
	Separated coniferous	10		
Are there low tree branches within 2 metres of the ground?	None within 10 - 30 metres	0		
	Present within 10 - 30 metres	10		

YARD / ZONE 2 - SCORE



SEPARATED

Trees are widely spaced and crowns do not touch or overlap



CONTINUOUS

High stand density where trees are tightly spaced and crowns frequently touch or overlap



HOME AND YARD HAZARD SCORE

SITE		TOTAL SCORE
Home / Non-Combustible Zone	Home	
Yard / Non-Combustible Zone	0 – 1.5 metres from the home	
Yard / Zone 1	1.5 metres – 10 metres from the home	
Yard / Zone 2	10 metres – 30 metres from the home	

HAZARD: Low: <21 Moderate: 21-29 High: 30-35 Extreme: >35

HOME CONSIDERATIONS

- Have you discussed wildfire damage and loss with your insurance provider?
- Is your roof in poor condition? A roof in poor condition will not provide protection from sparks and embers. Fire resistance deteriorates over time; check manufacturer guidelines to assess roof condition and potential fire resistance.
- Is your chimney clean? Does it have proper clearances, screens and spark arrestors?

YARD CONSIDERATIONS

- Is the area within 10 metres of buildings free of flammable trees, other vegetation and combustible materials?
- Are large capacity propane tanks within 10 metres of buildings? Are they clear of vegetation?
- Is fire suppression equipment readily available? Shovels, rakes, buckets and hoses should be easily accessible.
- Are burn barrels screened and at least 10 metres from combustible materials and buildings?
- Are overhead power lines clear of vegetation? Contact your service provider for assistance with removing trees in close proximity to utility lines.

EVACUATION TIPS

READY TO GO KIT

	2 litres of water for each person
	Non-refrigerated food and a manual can opener
	Plastic or paper plates, cups and utensils
	Flashlights and extra batteries
	Radio with batteries
	A change of clothes
	Emergency contact information and the number of someone to call who lives out of town
	Pet food and supplies for at least three days
	Small first aid kit
	Personal identification card
	Personal hygiene items, soap and hand sanitizer
	Store medicine you usually take near your ready-to-go kit
	Cash in small denominations

WHEN YOU LEAVE, REMEMBER TO

	Make sure you are safe before assisting others
	Listen to the radio or television for information from authorities
	Turn off your home water, electricity and gas
	Post easy to see signs for water and gas shut-offs
	Follow your family evacuation plan
	Bring your ready-to-go kit
	Close doors and windows

FAMILY EVACUATION PLAN

Fill out this form and keep it near your home phone or someplace where everyone in your house can easily find it. Keep a copy in your emergency kit, and rehearse your evacuation plan at least once a year.

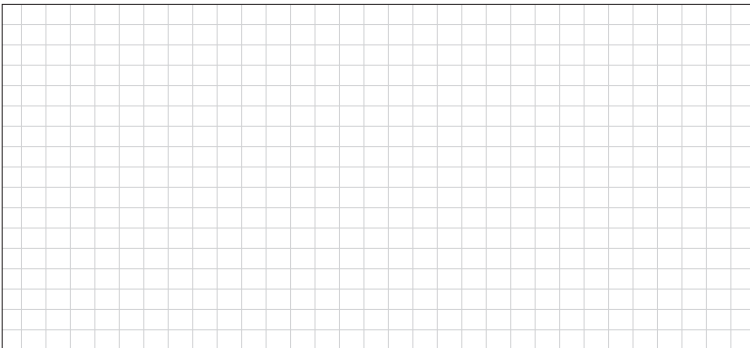
KEEP EMERGENCY NUMBERS POSTED NEAR YOUR PHONE

For more information on how to prepare for a wildfire and other emergencies, go to: getprepared.gc.ca

OUR OUT-OF-TOWN EMERGENCY CONTACT IS:

Name	
Relationship	
Home Phone	
Cell Phone	
Address	
Email	

OUR EVACUATION ROUTES ARE (SKETCH ROUTES BELOW):

A large grid for sketching evacuation routes, consisting of 20 columns and 20 rows of small squares.